

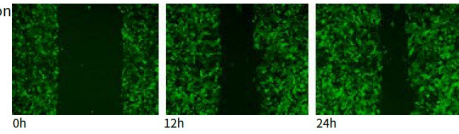
J-Scope Cell Culture Imaging System-Overview



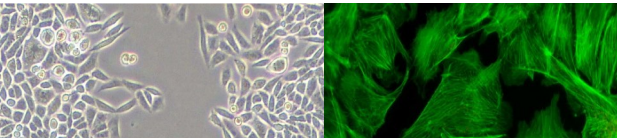
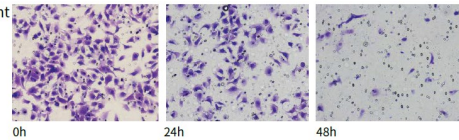
Observe cell growth status

without removing the plate from the incubator

Cell Scratch - Migration Experiment



Apoptosis Experiment



Application Field

- Live cell imaging and cell growth monitoring;
- Optimization of conditions for cell analysis experiments;
- Cell migration study;
- Cell quality control;
- Biopharmaceuticals;
- Cellular drug screening;
- Genetic analysis;
- Toxicological analysis;

Product Features

- Small enough to fit in a cell culture incubator;
- X-axis autofocus for easy operation;
- -Photography, photographic, extended filming, real-time recording of cell growth status;
- Red LEDs for transmitted light to reduce cell damage, and bicolor LEDs for fluorescence to meet multicolor imaging;
- Compatible with a variety of culture bottles, Petri dishes;
- Designed for cellular observation with a built-in phase contrast observation module for high contrast cell imaging;
- Resistant to high humidity, chemical corrosion, ultraviolet rays, long life and easy maintenance;

J-Scope Cell Culture Imaging System

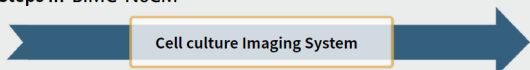
Easier Monitoring of Cell Status

The product is a fully automated cellular imaging system available in two models: phase contrast model BIMC-N6CM-A and phase contrast fluorescence model BIMC-N6CM-B. BIMC-N6CM is a revolutionary upgrade to live cell imaging analysis, which eliminates the cumbersome housing and complicated operation steps of ordinary biological microscopes, enabling observation of cells in one step. Meanwhile, BIMC-N6CM is small in size, making it easy to observe cells anywhere, whether at the lab bench, clean bench or in the cell incubator.

Steps in conventional cell observation



Steps in BIMC-N6CM



*This Product Contain 2 year warranty

J-Scope 5G Wi-Fi Eyepiece (Digital Camera)-Overview



J-Scope Cell culture Imaging System Specification

	BIMC-N6CM-A	BIMC-N6CM-B
Transmittance lighting	3W 627nm Red LED	
Reflective lighting	None	3W 525nm Green LED, 3W 485nm Blue LED
Light source	Electric dimming	Electric upper and lower light switching, fluorescent
Platform	Fixed platform, compatible with various culture bottles and culture dishes	
Lens	Semi-Plan phase contrast objective 10x	
Z-axis	Travel: Upper 7mm, lower 1.5mm; electric focus, auto-focus; manual 2mm/rev.	
Camera	5.0 Mega CMOS Black & White USB3.0 Camera analysis software	
Analysis software	Satisfy the basic functions of photo, video and time-lapse photography	
Size	220mm X 264mm X 240mm (W X D X H)	
Others	Tablet can be placed on top	