

J-Scope 4K 5G Wi-Fi Eyepiece (Digital Camera)-Overview

The BIMC-A03A-W3 is known around the globe for their ease-of-use and adaptability to a number of applications. The JC Cam's unique "All In One Box" design, assures each user that this camera can fit almost any microscope whether it's for Educational, Industrial or Clinical use. The JC CAM allows you to convert your digital images into documentation files for professional printing. It is equipped with a USB 3.0 and Wi-Fi for data transfer, ensuring a good response time.

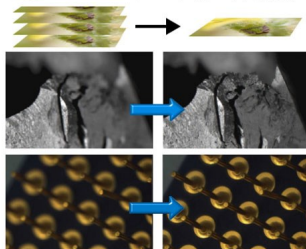


Live stream with multiple devices



深度合成機能

複数の焦点を合成して全体にピントがあった画像を自動制作



画像連結：ステッチング機能

複数の画像を合成し、広範囲の画像を作成

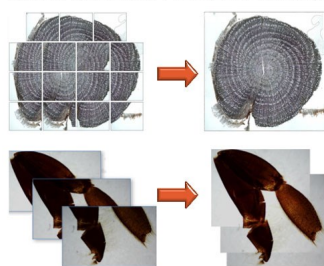


Image Sensor:

SONY IMX412 CMOS

Exposure Mode:

Roller shutter exposure

Maximum Resolution:

4000 x 3000 (12,000,000 pixels)

Sensor Optical Format:

1/2.3"

Pixel Size:

1.55µm x 1.55µm

ISO Sensitivity:

Equivalent to 100 - 12800

Exposure Time:

10us - 333ms, Real-time Auto and Manual adjustment

White Balance:

Real-time auto and manual RB adjustment

Preview resolution (USB, HDMI & 5G Wi-Fi):

30FPS@4000x3000, 3840x2160, 2592x1944, 1920x1080

Spectral Characteristics:

380 - 650nm

Record Format:

Snapshot

Format: JPG, BMP, PNG, TIFF

Resolution: 4000x3000, 3840x2160, 2592x1944, 1920x1080

Record

Format: AVI, MP4 file

Resolution: 30fps@1920x1080 (AVI), 1920x1080, 1600x1200 (MP4)

Supporting protocol:

5G Wi-Fi IEEE 802.11ac

Power Supply:

DC 5V 2A

Support System:

Microsoft® Windows 10/11 or more, IOS 11.0 or more, Android 7.0 or more

Computer Configuration:

CPU: i5 10th generation or later version, Memory: 16GB or more, Hard drive: 512GB or more, Graphics card: Core graphics, Network card: 10/100/1000M adaptive

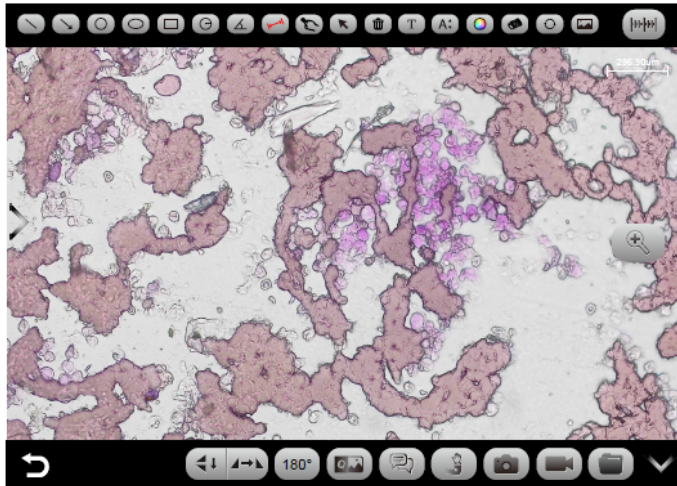
*All of our microscopes are covered by a 5 year warranty on mechanical components and 2 year warranty on electrical components

*Standard packing: Main Body + 0.5x Eyepiece + 30mm & 23.2mm Adapter + Software CD + USB + HDMI Cable

J-Scope 4K 5G Wi-Fi Eyepiece (Digital Camera)-Overview

APP software—for smart mobile devices

Own design App for IOS & Android System



Scan to connect

Scan "QR code" with the APP



Annotation and Measuring tools

17 tools

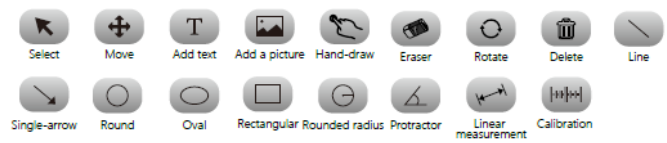
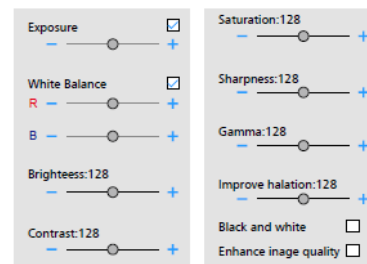


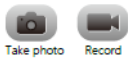
Image attribute adjustment



Software operating environment requirements

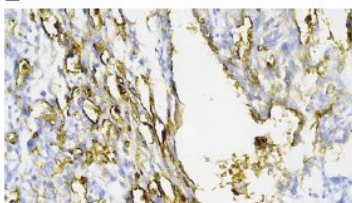
System	system version	CPU	RAM	ROM	Protocol
Android	5.0 or later version	Dual-core 1.7GHz or later version	at least 3GB	at least 32GB	5G Wifi IEEE 802.11(ac)
iOS	11.0 or later version	Dual-core 1.8GHz or later version	at least 2GB	at least 32GB	

Capture and record tools

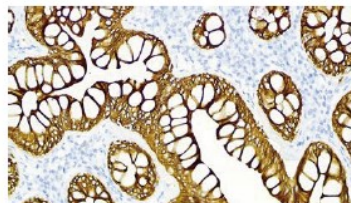


System Image samples

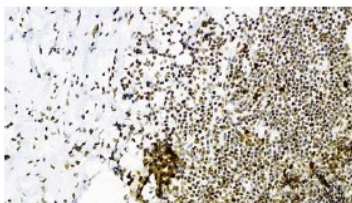
HE slices



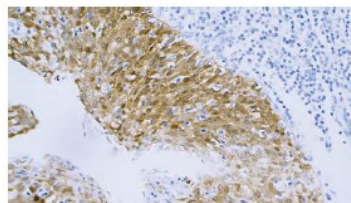
Ovarian cancer membranes 40X



Colon pulp 40X

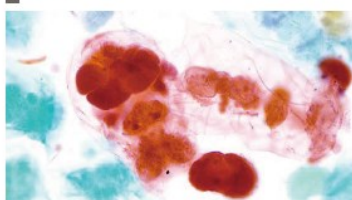


Appendix nucleus 40X

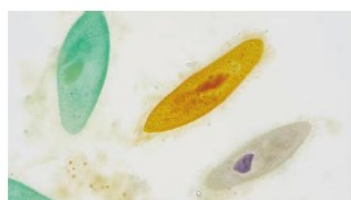


Cervical cancer nuclear slurry 40X

Insect slices

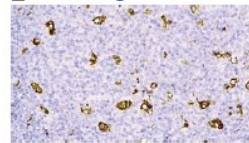


Wheel-worm 40X

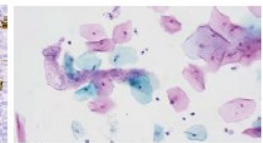


Paramecium stons 40X

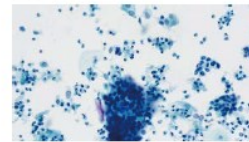
Pathological slices



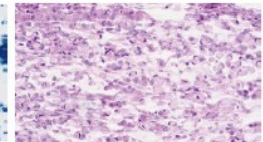
40X



40X

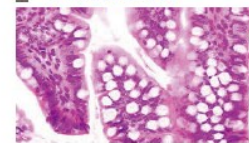


40X

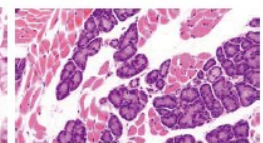


40X

Animals slices

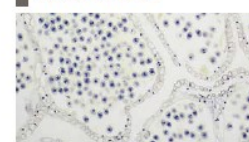


Canine ileum 40X

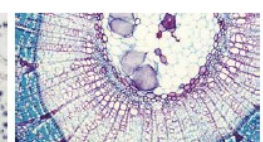


Dog taste buds 40X

Plant slices



Pine young male cone longitudinal 10X



Lime tree stem cross 10X