

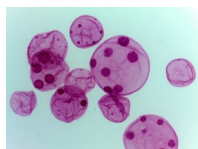
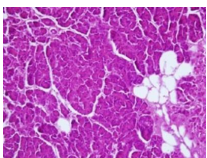
Digital Binocular 10.5" LCD Microscope-Overview

The BIMC-12DMH21 is a biological microscope with beautiful appearance and excellent cost performance. It is ideal for use in the biological and Laboratory fields. It can be used in health institutions, laboratories, research institutes, colleges and universities for biological and pathological education and professional research, clinical experiments and routine medical tests.



Live stream with multiple devices

BIMC-12DMH21 can send streaming images to WiFi enabled devices without the need for a router. High resolution streaming Wi-Fi camera.



Optical System:

Finite Optical System, 200mm

Observation tube:

Binocular

Inclination:

30° inclined

Eyepiece(s):

WF 10x (18mm) & WF 16x (12mm)

Nosepiece:

Reversed quadruple revolving nosepiece with click stops

Objective classification:

JPL SmartVision™ Plan Achromatic, DIN

Objective information:

4x NA=0.1 WD=18, 10x NA=0.25 WD=7, 40x (s) NA=0.65 WD=0.53, 100x (s)(oil) NA=1.25 WD=0.13

Objective mounting thread:

W 4/5" x 1/36" (JIS standard)

Stage:

Double Layers Mechanical Stage 136X136mm, Moving Range 70X30mm

Upper limit stop:

Upper limit stop preset but adjustable

Condenser:

Abbe Condenser NA1.25 with Aperture Diaphragm

Focus mechanism:

Coaxial Coarse and Fine Adjustment, Fine Division 0.002mm, Coarse Stroke 37.7mm per Rotation, Fine Stroke 0.2mm per Rotation, Moving Range 20mm

Illumination:

3W S-LED Illumination

Digital Screen:

10.5" LCD (4000*3000)

Sensor:

J-core 2.4G processor, 1/2 inch (2.0μm x 2.0μm Pixel Size)

Connection:

Support Wi-Fi wireless and bluetooth. It's easy to extend the application.

Image Output:

USB3.0、USB2.0、HDMI、Gigabit Network Port

System:

Android 11

*All of our microscopes are covered by a 5 year warranty on mechanical components and 2 year warranty on electrical components