

J-Scope 5G Wi-Fi Eyepiece (Digital Camera)-Overview

The BIMC-A03A-W2 is known around the globe for their ease-of-use and adaptability to a number of applications. The JC Cam's unique "All In One Box" design, assures each user that this camera can fit almost any microscope whether it's for Educational, Industrial or Clinical use. The JC CAM allows you to convert your digital images into documentation files for professional printing. It is equipped with a USB 3.0 and Wi-Fi for data transfer, ensuring a good response time.



Live stream with multiple devices

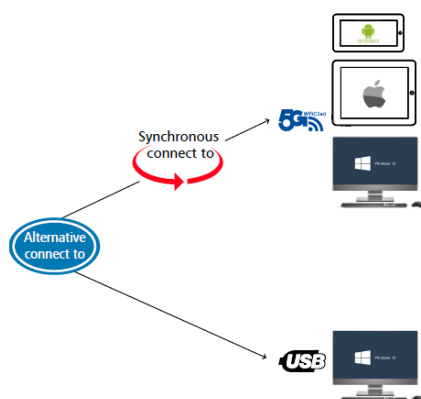


Image Sensor:

OnSemi AR0521

Exposure Mode:

Roller shutter exposure

Maximum Resolution:

2592 x 1944 (5038848 pixels)

Sensor Optical Format:

1/2.5" [5.90mm x 4.5mm (H x V), Diagonal 7.0mm]

Pixel Size:

2.2μm x 2.2μm

Dynamic Range:

74.3dB

SNRmax:

40dB

Exposure:

3.9ms - 320ms, Automatic and Manual

White Balance:

Real-time auto, single auto, manual adjustment

Preview resolution (USB & 5G Wi-Fi):

30FPS@2592x1944, 1920x1080, 1024x768, 640x480

Spectral Characteristics:

380 - 650nm

Record Format:

Snapshot

Format: JPG, BMP, PNG, TIFF, PDF

Resolution: 2592 x 1944, 1920 x 1080, 1024 x 768, 640 x 480

Record

Format: MJPG format AVI file

Resolution: 30fps@ 1920 x 1080, 1024 x 768, 640 x 480

Supporting protocol:

5G Wi-Fi IEEE 802.11ac

Working frequency range:

5.180 - 5.825GHz

Support System:

Microsoft® Windows XP/7/8/8.1/10, IOS, Android

Computer Configuration:

CPU: equal or more than the second generation Intel core 2.8GHz, Memory: 2GB or more, USB port: USB 2.0 / 3.0 or more, Displayer: suggest 17" or larger

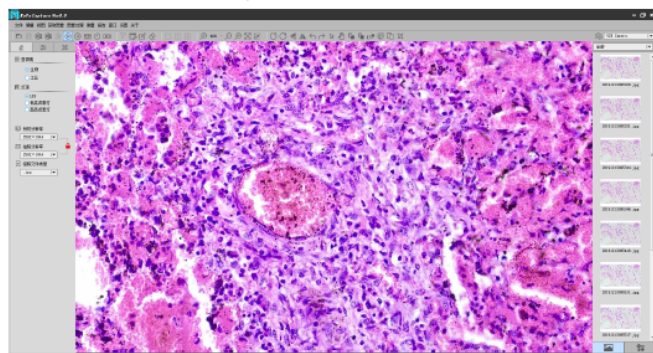
*All of our microscopes are covered by a 5 year warranty on mechanical components and 2 year warranty on electrical components

*Standard packing: Main Body + 0.5x Eyepiece + 30mm & 23.2mm Adapter + Software CD + Type-C USB

J-Scope 5G Wi-Fi Eyepiece (Digital Camera)-Overview

PC software

JC CAM



Working mode setting

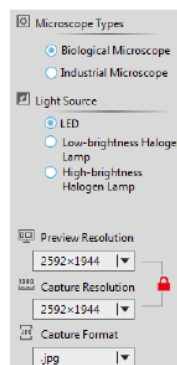
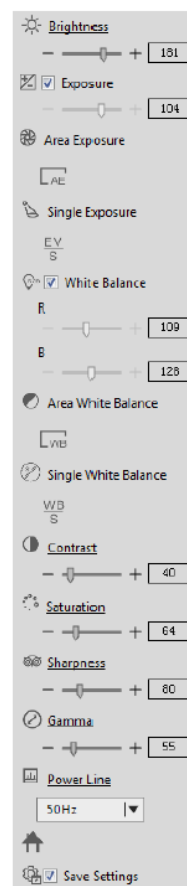


Image attribute adjustment



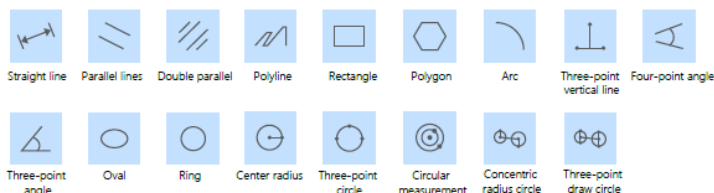
Software operating environment requirements

System	CPU	RAM	ROM	Graphics card	Network card
Microsoft® Windows® 7 (32 & 64 bit) Windows® 10(64 bit)	i7 8th-generation or later version	200GB or more	8GB or more	Discrete graphics (NVIDIA GeForce)	Wireless network card (Supports 5G WiFi IEEE 802.11ac)

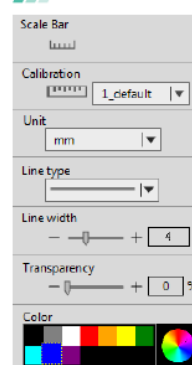


Measurement module

18 measurement tools

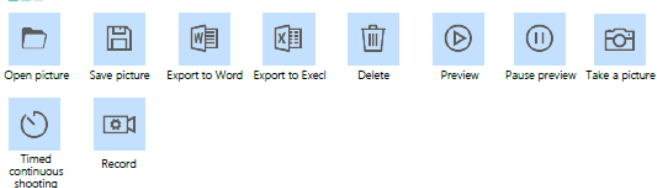


Calibration tools

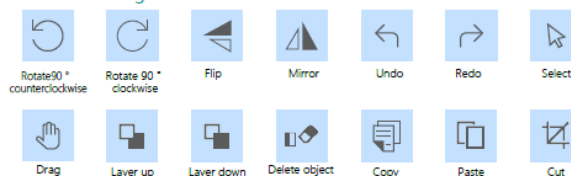


Rich auxiliary tools

10 common tools



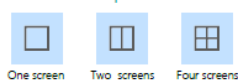
14 editing tools



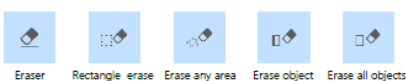
5 Window tools



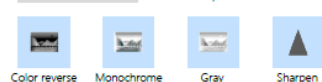
3 Multiple screen tools



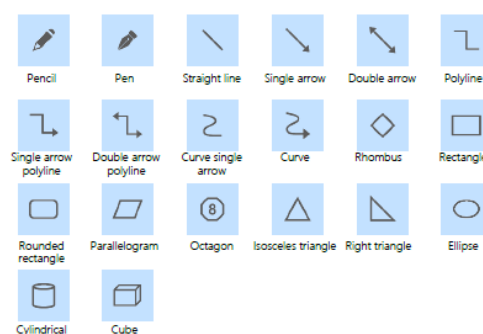
Erase tools



Special effects tools



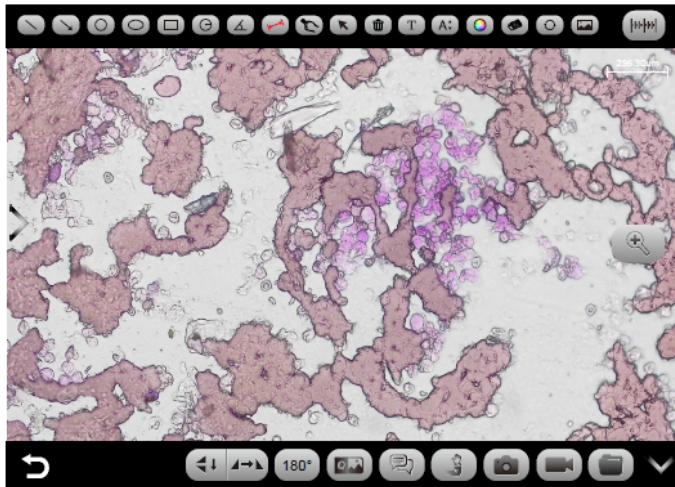
Drawing tools



J-Scope 5G Wi-Fi Eyepiece (Digital Camera)-Overview

APP software—for smart mobile devices

Own design App for IOS & Android System



Software operating environment requirements

System	system version	CPU	RAM	ROM	Protocol
Android	5.0 or later version	Dual-core 1.7GHz or later version	at least 3GB	at least 32GB	5G Wifi IEEE 802.11(ac)
iOS	11.0 or later version	Dual-core 1.8GHz or later version	at least 2GB	at least 32GB	

»»» Capture and record tools



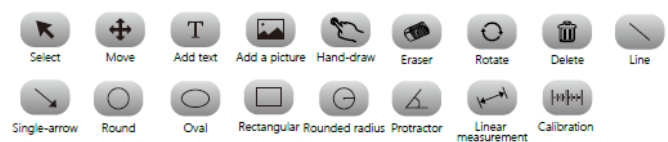
»»» Scan to connect

Scan "QR code" with the APP

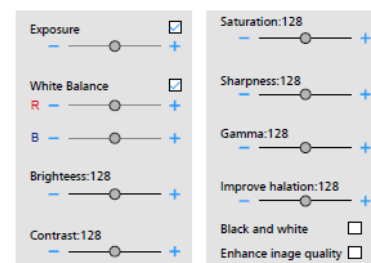


»»» Annotation and Measuring tools

17 tools

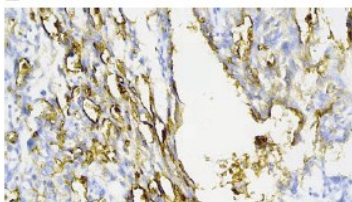


»»» Image attribute adjustment

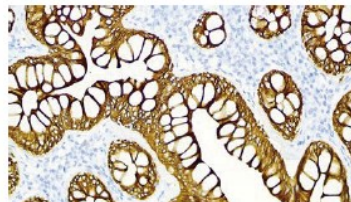


System Image samples

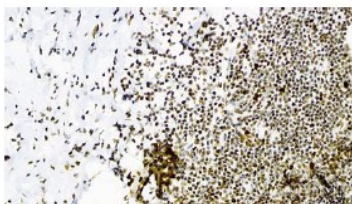
HE slices



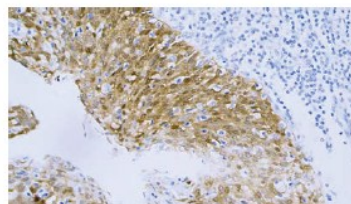
Ovarian cancer membranes 40X



Colon pulp 40X

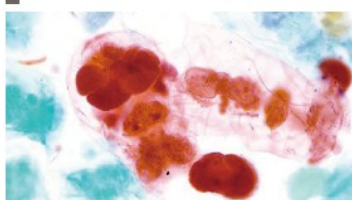


Appendix nucleus 40X

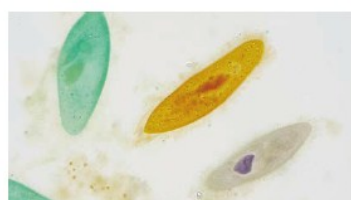


Cervical cancer nuclear slurry 40X

Insect slices

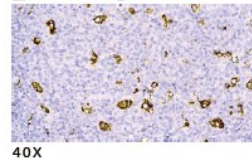


Wheel-worm 40X

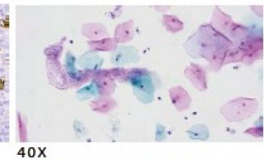


Paramecium stons 40X

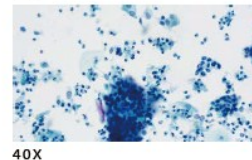
Pathological slices



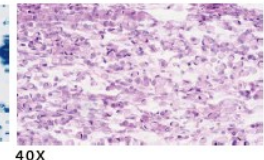
40X



40X

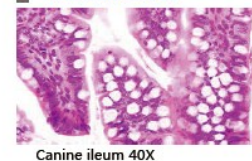


40X

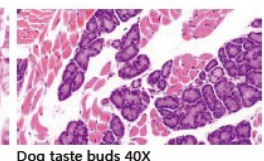


40X

Animals slices

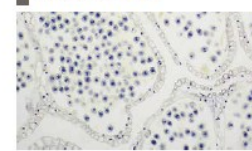


Canine ileum 40X

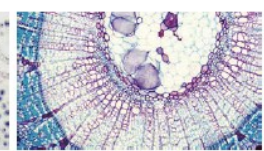


Dog taste buds 40X

Plant slices



Pine young male cone longitudinal 10X



Lime tree stem cross 10X